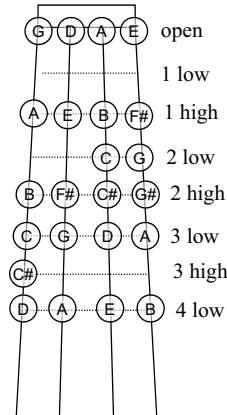


# Notes Common in Old-Time Tunes (fiddle in standard tuning)

Major Keys Common  
in Old-Time tunes,  
and their notes:

Keys:	<b>C</b>	<b>G</b>	<b>D</b>	<b>A</b>
Sharps:	0	1	2	3
	C	G	D	A
	D	A	E	B
	E	B	F#	C#
	F	C	G	D
	G	D	A	E
	A	E	B	F#
	B	F#	C#	G#
	(C)	(G)	(D)	(A)

The notes on  
a fiddle in  
standard tuning:



The most common chords in  
the major and minor modes  
are the I, V and IV (1, 5 and 4).

Together they contain  
all the notes of the scale:

	<u>1</u>	<u>2</u>	<u>3</u>	<u>4</u>	<u>5</u>	<u>6</u>	<u>7</u>
I:	x		x		x		
V:		x			x		x
IV:	x			x		x	

## Basic Fiddle Chords (key of D, standard tuning)

Here are some simple chord fingerings for the most common chords in the key of D (I = D chord, V = A chord, IV = G chord)  
(The diagrams represent fingering positions on the four strings, 1/2-step apart.)

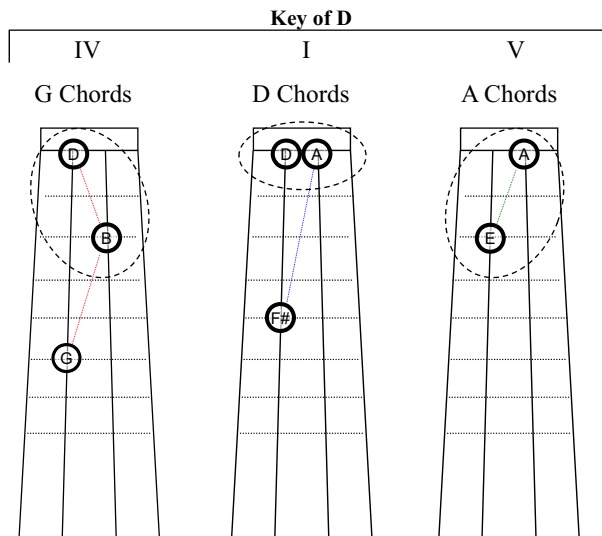
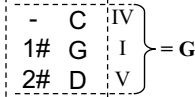
- Use circled notes from two adjacent strings. The dark solid circles are good ones to start with.
- Where there are different forms, experiment to hear how the pairs sound different (higher and lower).
- Practice moving between these basic chords. Follow patterns in tunes in the key of D in the tune books, or I – IV – I – V – I ... Then try playing backup along with some of the 'D' tunes on the CDs.
- Experiment with playing in the same range as the melody, and with trying to play lower when the melody is high, and vice versa

Circle  
of fifths

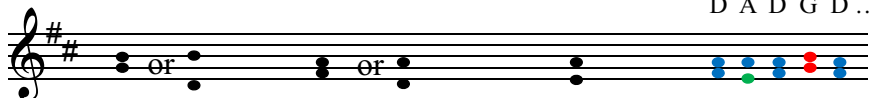
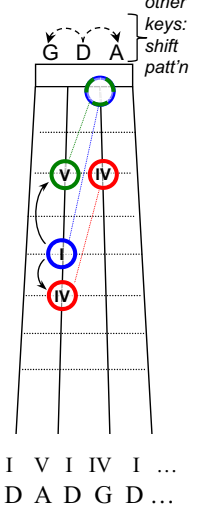
- 7<sup>b</sup> C<sup>b</sup>
- 6<sup>b</sup> G<sup>b</sup>
- 5<sup>b</sup> D<sup>b</sup>
- 4<sup>b</sup> A<sup>b</sup>
- 3<sup>b</sup> E<sup>b</sup>
- 2<sup>b</sup> B<sup>b</sup>
- 1<sup>b</sup> F
- C
- 1<sup>#</sup> G
- 2<sup>#</sup> D
- 3<sup>#</sup> A
- 4<sup>#</sup> E
- 5<sup>#</sup> B
- 6<sup>#</sup> F<sup>#</sup>
- 7<sup>#</sup> C<sup>#</sup>

Scale:

- D 1 (I)
- E 2
- F# 3
- G 4 (IV)
- A 5 (V)
- B 6
- C 7



Finger  
Exercise



# Common Old-Time Fiddle Chords in Standard Tuning

Some suggested simple chord fingerings.

Use circled notes from two adjacent strings. The **dark circles** are good ones to start with.

Experiment to hear how the pairs sound different (higher and lower).

Try different combinations, playing along with the tunes on the CD.

Key of A  
IV I V

Key of D  
IV I V

Key of G  
IV I V

Circle of fifths

- 7<sup>b</sup> C<sup>b</sup>
- 6<sup>b</sup> G<sup>b</sup>
- 5<sup>b</sup> D<sup>b</sup>
- 4<sup>b</sup> A<sup>b</sup>
- 3<sup>b</sup> E<sup>b</sup>
- 2<sup>b</sup> B<sup>b</sup>
- 1<sup>b</sup> F
- C
- 1<sup>#</sup> G
- 2<sup>#</sup> D
- 3<sup>#</sup> A
- 4<sup>#</sup> E
- 5<sup>#</sup> B
- 6<sup>#</sup> F<sup>#</sup>
- 7<sup>#</sup> C<sup>#</sup>

D { 1<sup>b</sup> 2<sup>b</sup> 3<sup>b</sup> 4<sup>b</sup> } I V } G  
 { 1<sup>#</sup> 2<sup>#</sup> 3<sup>#</sup> 4<sup>#</sup> } I V } A

©2002, 2005, 2016 Pete Showman Rev. 4/16

## More Ways to Make These Chords (standard tuning)

Key of A  
IV I V

Key of D  
IV I V

Key of G  
IV I V

Circle of fifths

- 7<sup>b</sup> C<sup>b</sup>
- 6<sup>b</sup> G<sup>b</sup>
- 5<sup>b</sup> D<sup>b</sup>
- 4<sup>b</sup> A<sup>b</sup>
- 3<sup>b</sup> E<sup>b</sup>
- 2<sup>b</sup> B<sup>b</sup>
- 1<sup>b</sup> F
- C
- 1<sup>#</sup> G
- 2<sup>#</sup> D
- 3<sup>#</sup> A
- 4<sup>#</sup> E
- 5<sup>#</sup> B
- 6<sup>#</sup> F<sup>#</sup>
- 7<sup>#</sup> C<sup>#</sup>

D { 1<sup>b</sup> 2<sup>b</sup> 3<sup>b</sup> 4<sup>b</sup> } I V } G  
 { 1<sup>#</sup> 2<sup>#</sup> 3<sup>#</sup> 4<sup>#</sup> } I V } A

©2002, 2005, 2016 Pete Showman Rev. 4/16