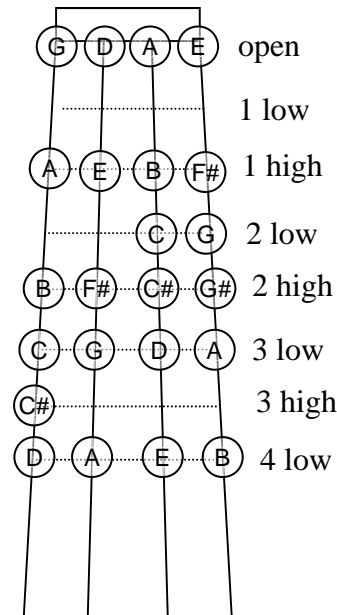


Notes Common in Old-Time Tunes (fiddle in standard tuning)

Major Keys Common
in Old-Time tunes,
and their notes:

Keys:	<u>C</u>	<u>G</u>	<u>D</u>	<u>A</u>
Sharps:	0	1	2	3
	C	G	D	A
	D	A	E	B
	E	B	F#	C#
	F	C	G	D
	G	D	A	E
	A	E	B	F#
	B	F#	C#	G#
	(C)	(G)	(D)	(A)

The notes on
a fiddle in
standard tuning:



The most common chords in
the major and minor modes
are the I, V and IV (1, 5 and 4).

Together they contain
all the notes of the scale:

	<u>1</u>	<u>2</u>	<u>3</u>	<u>4</u>	<u>5</u>	<u>6</u>	<u>7</u>
I:	x		x		x		
V:		x			x		x
IV:	x			x		x	

Basic Fiddle Chords (key of D, standard tuning)

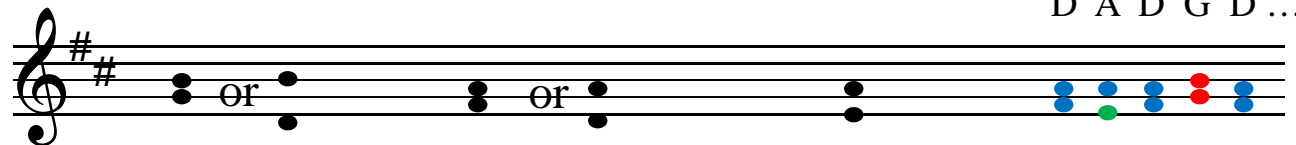
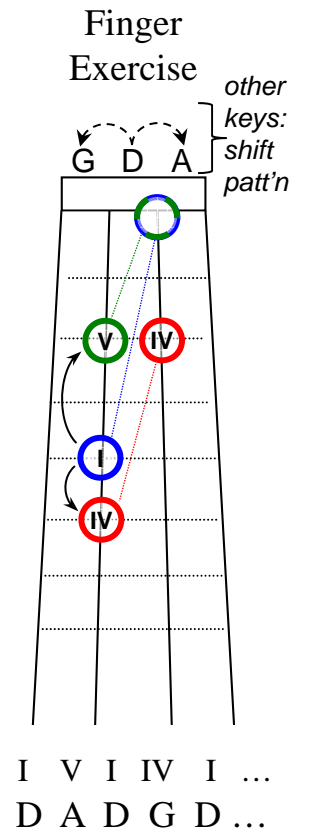
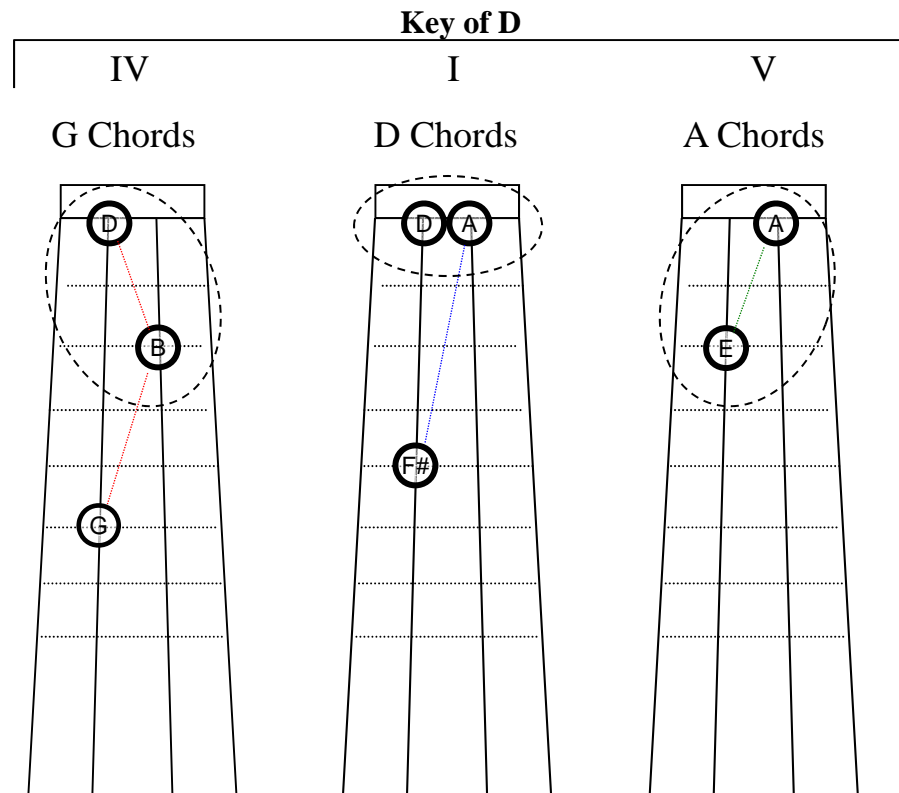
Here are some simple chord fingerings for the most common chords in the key of D (I = D chord, V = A chord, IV = G chord)
 (The diagrams represent fingering positions on the four strings, 1/2-step apart.)

- Use circled notes from two adjacent strings. The dark solid circles are good ones to start with.
- Where there are different forms, experiment to hear how the pairs sound different (higher and lower).
- Practice moving between these basic chords. Follow patterns in tunes in the key of D in the tune books, or I – IV – I – V – I ... Then try playing backup along with some of the 'D' tunes on the CDs.
- Experiment with playing in the same range as the melody, and with trying to play lower when the melody is high, and vice versa

Circle of fifths	
7 ^b	C _b
6 ^b	G _b
5 ^b	D _b
4 ^b	A _b
3 ^b	E _b
2 ^b	B _b
1 ^b	F
-	C
1 [#]	G
2 [#]	D
3 [#]	A
4 [#]	E
5 [#]	B
6 [#]	F [#]
7 [#]	C [#]

Scale:

D	1	(I)
E	2	
F [#]	3	
G	4	(IV)
A	5	(V)
B	6	
C	7	



Common Old-Time Fiddle Chords in Standard Tuning

Some suggested simple chord fingerings.

Use circled notes from two adjacent strings. The **dark circles** are good ones to start with.

Experiment to hear how the pairs sound different (higher and lower).

Try different combinations, playing along with the tunes on the CD.

The diagram illustrates common old-time fiddle chords in standard tuning (E2-A2-D3-F3-A3-E4) across three keys: G, D, and A. It includes a circle of fifths, fret numbers, and musical notation for each chord.

Circle of fifths:

- 7^b C^b
- 6^b G^b
- 5^b D^b
- 4^b A^b
- 3^b E^b
- 2^b B^b
- 1^b F
- C
- 1[#] G
- 2[#] D
- 3[#] A
- 4[#] E
- 5[#] B
- 6[#] F[#]
- 7[#] C[#]

Key of G:

- IV C Chords:** G (circled), E (circled), E, C (circled)
- I G Chords:** G (circled), D (circled), B (circled), G (circled), G
- V D Chords:** D (circled), A (circled), A, F# (circled), F#

Key of D:

- IV A Chords:** A (circled), E (circled), A, E (circled), C# (circled)

Key of A:

- V E Chords:** G# (circled), E (circled), B (circled), G# (circled), G#

Musical notation at the bottom shows the notes for each chord on a treble clef staff.

More Ways to Make These Chords (standard tuning)

Circle of fifths

7 ^b	C _b	
6 ^b	G _b	
5 ^b	D _b	
4 ^b	A _b	
3 ^b	E _b	
2 ^b	B _b	
1 ^b	F	
-	C	IV
1 [#]	G	I
2 [#]	D	V
3 [#]	A	
4 [#]	E	
5 [#]	B	
6 [#]	F [#]	
7 [#]	C [#]	

↑
= G
↓

Key of G

IV
C Chords

I
G Chords

V
D Chords

Key of D

IV
A Chords

I
E Chords

Key of A

IV
E Chords

I
A Chords

V
E Chords