


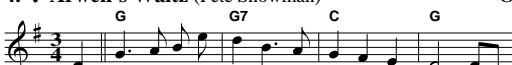





A

1. ✓ **Angelina Baker** (Angeline the Baker) D

2. ✓ **Angelina Baker's Gone** (Stephen Foster song) D

3. ✓ **Arkansas Traveler** D

4. ✓ **Arwen's Waltz** (Pete Showman) G


5. **Ashokan Farewell** D

6. **Avalon Quickstep** D


B

7. ✓ **Barlow Knife** G

8. ✓ **Battle of Manassas** (aka Abe's Retreat) Ador

9. ✓ **Been to the East, Been to the West** G

10. ✓ **Big Eyed Rabbit's Gone** A

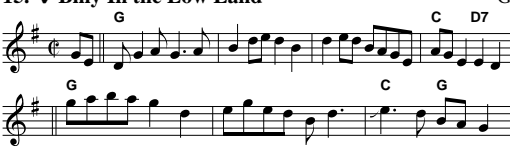


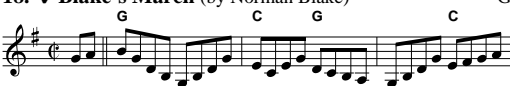


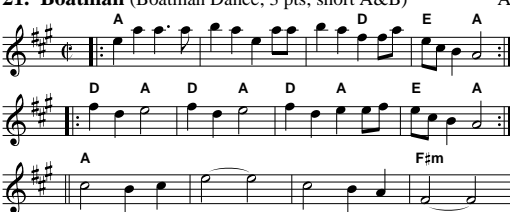
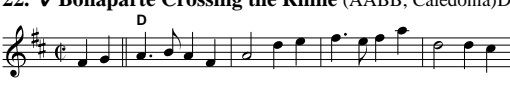

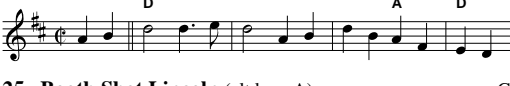




11. **Big Sandy River** A


12. ✓ **Big Scioty** (also Sciota, Sciote) G+Em


13. **Bill Cheatham** A

14. ✓ **Bill Katon's Tune** (aka Jeff City) G



15. ✓ **Billy In the Low Land** G
- 
16. ✓ **Billy in the Lowground** C
- 
17. **Blackberry Blossom** G
- 
18. ✓ **Blake's March** (by Norman Blake) G
- 
19. ✓ **Bluewater Hornpipe** (President Garfield's) Bb
- 
20. ✓ **Boatin' Up Sandy** (crooked) Edo+Ado
- 
21. **Boatman** (Boatman Dance; 3 pts; short A&B) A
- 
22. ✓ **Bonaparte Crossing the Rhine** (AABB; Caledonia) D
- 
23. **Bonaparte Crossing the Rockies** Am
- 
24. ✓ **Bonaparte's Retreat** (ABB CBB ABB ...) D
- 
25. **Booth Shot Lincoln** (alt key: A) G
- 
26. **Breaking Up Christmas** A
- 
27. ✓ **Buck Mountain** D
- 
28. **Buffalo Gals** G
- 

29. Bull At the Wagon (3 parts, not too fast) A

Musical notation for 'Bull At the Wagon' in G major, 2/4 time. The melody consists of a series of eighth notes. Chords are indicated as A and E above the staff, and C below the staff.

30. Cababi Polka (Gu-Achi; crooked) D

Musical notation for 'Cababi Polka' in G major, 2/4 time. The melody consists of eighth notes. Chords are indicated as D, A, and D above the staff.

31. Camp Meeting on the 4th of July (use drones) D

Musical notation for 'Camp Meeting on the 4th of July' in G major, 2/4 time. The melody consists of eighth notes. Chords are indicated as D and A above the staff.

32. Campbell's Farewell to Red Gap (3 parts) Amix

Musical notation for 'Campbell's Farewell to Red Gap' in G major, 2/4 time. The piece is arranged in three parts. Chords are indicated as A, G, A, and G above the staves.

33. Cane Sugar C

Musical notation for 'Cane Sugar' in C major, 6/8 time. The melody consists of eighth notes. Chords are indicated as C, C, F, and C above the staves.

34. Cherokee Shuffle A

Musical notation for 'Cherokee Shuffle' in G major, 2/4 time. The melody consists of eighth notes. A chord of A is indicated above the staff.

35. Childgrove (English dance) Ddor

Musical notation for 'Childgrove' in G major, 2/4 time. The melody consists of eighth notes. Chords are indicated as Dm, Gm, and Am above the staff.

36. Chinese Breakdown (alt key: C) D

Musical notation for 'Chinese Breakdown' in G major, 2/4 time. The melody consists of eighth notes with a triplet. Chords are indicated as D and A above the staff.

37. ✓ Chinquapin Hunting (3 parts, crooked) A

Musical notation for 'Chinquapin Hunting' in G major, 2/2 time. The piece is arranged in three parts. Chords are indicated as A, D, A, D, A, D, A, D, D, E7, and D above the staves.

38. ✓ Cindy D

Musical notation for 'Cindy' in G major, 2/4 time. The melody consists of eighth notes. Chords are indicated as D and A above the staff.

39. Cluck Old Hen Ador

Musical notation for 'Cluck Old Hen' in G major, 2/4 time. The melody consists of eighth notes. A chord of A is indicated above the staff.

40. ✓ Cold Frosty Morning Ador

Musical notation for 'Cold Frosty Morning' in G major, 2/4 time. The melody consists of eighth notes with a triplet. Chords are indicated as Am and G above the staff.

41. ✓ Coleman's March D

Musical notation for 'Coleman's March' in G major, 2/4 time. The melody consists of eighth notes. Chords are indicated as D, G, D, and A above the staff.

42. Coleraine Am

Musical notation for 'Coleraine' in C major, 6/8 time. The melody consists of eighth notes. Chords are indicated as Am, E, and Am above the staff.

43. **Colored Aristocracy** G
-
44. **Come Dance and Sing** D
-
45. **Cora Dye** G
-
46. **Country Waltz** D
-
47. **✓ Cowboy Waltz (AA' B)** D
-
48. **Crooked Stovepipe** G
-
49. **Cuckoo's Nest** Dmix
-
50. **Cumberland (by Larry Ungar)** A
-
51. **✓ Cumberland Gap (3-part D ver: AA B CC)** D
-
- _____ D _____
52. **✓ Damon's Winder (A=low, B=high)** Dmx+D
-
53. **✓ Dance All Night (With a Bottle in your Hand.)** G
-
54. **Denver Belle** C+G
-
55. **Devil Eat the Groundhog** G
-
56. **Devil's Dream** A
-

57. **Dill Pickle Rag** (AB AC BA; pt 3 in C) G+C

Musical notation for Dill Pickle Rag, piece 57. It consists of three staves of music in G major, 2/4 time. The first staff has a G chord above the first measure and an Em chord above the last measure. The second staff has D, G, and D chords above the first, second, and third measures respectively. The third staff has C and G chords above the first and second measures respectively.

58. **Dinah** (old-time tune) A

Musical notation for Dinah, piece 58. It consists of one staff of music in A major, 2/4 time.

59. ✓ **Dinah's Waltz** (Pete Showman) D

Musical notation for Dinah's Waltz, piece 59. It consists of one staff of music in D major, 3/4 time. Chords D, A7, D, and G are indicated above the first, second, fourth, and fifth measures respectively.

60. ✓ **Dry and Dusty** (AAB or AABB) D

Musical notation for Dry and Dusty, piece 60. It consists of one staff of music in D major, 2/4 time.

61. **Dubuque** D

Musical notation for Dubuque, piece 61. It consists of two staves of music in D major, 2/4 time. Chords D and G are indicated above the first and fifth measures of the first staff respectively.

62. ✓ **Duck River** D

Musical notation for Duck River, piece 62. It consists of two staves of music in D major, 2/4 time. Chords D and G are indicated above the first and fifth measures of the first staff respectively.

63. ✓ **Ducks on the Millpond** (Rayna Gellert ver.) D

Musical notation for Ducks on the Millpond, piece 63. It consists of one staff of music in D major, 2/4 time. Chords D, (A7), D, A7, and D are indicated above the first, second, fourth, fifth, and sixth measures respectively.

64. ✓ **Ducks on the Pond** (Henry Reed ver.) Ador

Musical notation for Ducks on the Pond, piece 64. It consists of two staves of music in D major, 2/4 time. Chords Am, G, Em, and G are indicated above the first, second, third, and fourth measures of the first staff respectively.

65. **Dusty Miller** (♭ la J.P. Fraley) Amix

Musical notation for Dusty Miller, piece 65. It consists of one staff of music in D major, 2/4 time. An E chord is indicated below the first measure.

66. **East Tennessee Blues** C

Musical notation for East Tennessee Blues, piece 66. It consists of one staff of music in C major, 2/4 time. Chords C and F are indicated above the first and fifth measures respectively.

67. **Ebenezer** G

Musical notation for Ebenezer, piece 67. It consists of one staff of music in G major, 2/4 time. Chords G and D are indicated above the first and fifth measures respectively.

68. ✓ **Eighth of January** (Alt key: G) D

Musical notation for Eighth of January, piece 68. It consists of one staff of music in D major, 2/4 time. Chords D, G, and A7 are indicated above the first, second, and fourth measures respectively.

69. ✓ **Elzic's Farewell** (3 pts: AA.B.A.CC +AA) Ador

Musical notation for Elzic's Farewell, piece 69. It consists of three staves of music in D major, 2/4 time. Chords Am, G, Am, Am, G, Am, and Dm are indicated above the first, second, third, fourth, fifth, sixth, and seventh measures respectively.

F

70. ✓ Falls of Richmond ((AA B C B) AA) Am+A

Musical notation for 'Falls of Richmond' in G major, 4/4 time. The melody is written on a treble clef staff. Chords are indicated above the notes: Am, G, Am, G, Am. A triplet of eighth notes is marked with a '3' above it. The key signature has one sharp (F#).

71. Fandango Pizza Jam F

Musical notation for 'Fandango Pizza Jam' in F major, 3/4 time. The melody is written on a treble clef staff. Chords are indicated above the notes: F, Am, Dm, Gm, Gm, C7. The key signature has two flats (Bb, Eb).

72. Fig for a Kiss (Trad. Irish; AABB xN) Edor

Musical notation for 'Fig for a Kiss' in D major, 9/8 time. The melody is written on a treble clef staff. Chords are indicated above the notes: Em, D, Em. The key signature has two sharps (F#, C#).

73. ✓ Fishar's (aka Fisher's) Hornpipe (swing it) D

Musical notation for 'Fishar's Hornpipe' in D major, 4/4 time. The melody is written on a treble clef staff. Chords are indicated above the notes: D, G, D, G, D, G. A triplet of eighth notes is marked with a '3' below it. The key signature has two sharps (F#, C#).

74. Flop-Eared Mule G+D

Musical notation for 'Flop-Eared Mule' in G major, 4/4 time. The melody is written on a treble clef staff. Chords are indicated above the notes: G, D7, D, A7. The key signature has one sharp (F#).

75. Flowers of Edinburgh G

Musical notation for 'Flowers of Edinburgh' in G major, 4/4 time. The melody is written on a treble clef staff. Chords are indicated above the notes: G, D. The key signature has one sharp (F#).

76. ✓ Fly Around My Pretty Little Miss D

Musical notation for 'Fly Around My Pretty Little Miss' in D major, 4/4 time. The melody is written on a treble clef staff. Chords are indicated above the notes: D. The key signature has two sharps (F#, C#).

77. Folding Down the Sheets (short parts) D

Musical notation for 'Folding Down the Sheets' in D major, 4/4 time. The melody is written on a treble clef staff. Chords are indicated above the notes: D. The key signature has two sharps (F#, C#).

78. Forked Deer D

Musical notation for 'Forked Deer' in D major, 4/4 time. The melody is written on a treble clef staff. Chords are indicated above the notes: D. A note with a circled 'r' above it indicates a grace note. The key signature has two sharps (F#, C#).

79. Fortune D

Musical notation for 'Fortune' in D major, 4/4 time. The melody is written on a treble clef staff. Chords are indicated above the notes: D, A, D, A. The key signature has two sharps (F#, C#).

G

80. ✓ Gearshift Polka ('A' part 4x 1st time) G

Musical notation for 'Gearshift Polka' in G major, 4/4 time. The melody is written on a treble clef staff. Chords are indicated above the notes: G, C. The key signature has one sharp (F#).

81. ✓ Girl I Left Behind Me (Rayna Gellert) G

Musical notation for 'Girl I Left Behind Me (Rayna Gellert)' in G major, 4/4 time. The melody is written on a treble clef staff. Chords are indicated above the notes: Em, G. A triplet of eighth notes is marked with a '3' below it. The key signature has one sharp (F#).

82. ✓ Girl I Left Behind Me, The (Trad. ver.) G

Musical notation for 'Girl I Left Behind Me, The (Trad. ver.)' in G major, 4/4 time. The melody is written on a treble clef staff. Chords are indicated above the notes: G. The key signature has one sharp (F#).

83. ✓ Girl With the Blue Dress On G

Musical notation for 'Girl With the Blue Dress On' in G major, 4/4 time. The melody is written on a treble clef staff. Chords are indicated above the notes: G. The key signature has one sharp (F#).

84. ✓ Goin' Up Town D

Musical notation for 'Goin' Up Town' in D major, 2/4 time. The melody is on a single staff. Chords are indicated above the notes: D, D, G.

85. Golden Slippers (Alt key: D) G

Musical notation for 'Golden Slippers' in G major, 2/4 time. The melody is on a single staff. Chords are indicated above the notes: G.

86. ✓ Goodbye Girls, I'm Going to Boston 1 (st G+Gmx

Musical notation for 'Goodbye Girls, I'm Going to Boston 1' in G major, 2/4 time. The melody is on a single staff. Chords are indicated above the notes: G, C, D7, F.

87. ✓ Goodbye Girls, I'm Going to Boston 2 (cro Gmix

Musical notation for 'Goodbye Girls, I'm Going to Boston 2' in G major, 3/2 time. The melody is on a single staff. Chords are indicated above the notes: G, F.

88. ✓ Goodbye Liza Jane D

Musical notation for 'Goodbye Liza Jane' in D major, 2/4 time. The melody is on a single staff. Chords are indicated above the notes: D, A, D, G, D.

89. Grasshopper Sittin' On a Sweet Potato Vine D

Musical notation for 'Grasshopper Sittin' On a Sweet Potato Vine' in D major, 2/4 time. The melody is on a single staff. Chords are indicated above the notes: D, G.

90. Greasy Coat Ador

Musical notation for 'Greasy Coat' in G major, 2/4 time. The melody is on a single staff. Chords are indicated above the notes: Am, G, Am, G, Am, G, Am, G.

91. Green Mountain Petronella G

Musical notation for 'Green Mountain Petronella' in G major, 2/4 time. The melody is on a single staff. Chords are indicated above the notes: G, D.

92. ✓ Green Willis (The Raw Recruit) D

Musical notation for 'Green Willis (The Raw Recruit)' in D major, 2/4 time. The melody is on a single staff. Chords are indicated above the notes: D, A. A triplet of eighth notes is marked with a '3'.

93. Growling Old Man, Grumbling Old Woman Dm+Amx

Musical notation for 'Growling Old Man, Grumbling Old Woman' in D major, 2/4 time. The melody is on a single staff. Chords are indicated above the notes: Am, G, A, G, A.

94. Grub Springs A

Musical notation for 'Grub Springs' in A major, 2/4 time. The melody is on a single staff. Chords are indicated above the notes: A.

_____ H _____

95. ✓ Hammares Gnglt (Crooked; Swedish) Dm

Musical notation for 'Hammares Gnglt (Crooked; Swedish)' in D minor, 2/4 time. The melody is on a single staff. Chords are indicated above the notes: Dm, F.

96. Harrison's Favorite Jig (Pete Showman) D

Musical notation for 'Harrison's Favorite Jig (Pete Showman)' in D major, 6/8 time. The melody is on a single staff. Chords are indicated above the notes: D, A, D, G, D, A.

97. Harvest Home (a hornpipe: swing it) D

Musical notation for 'Harvest Home (a hornpipe: swing it)' in D major, 2/4 time. The melody is on a single staff. Chords are indicated above the notes: D, A.

98. **Hobb Dye** (swing it) G
-
99. **Hohokam Polka** (Cu-Achi; crooked) D
-
100. **✓ Hollow Poplar** G
-
101. **✓ Home with the Girls in the Morning** Ddor
-
102. **✓ Hop Kiln Road** (By John Gregorin) G
-
103. **Hop Light Ladies** (Miss McLeod's, Uncle Joe) G
-
104. **✓ Hungarian Railroad** D
-
- _____ | J _____
105. **✓ Inger's Brudvals** D
-
106. **Irish Rosebud Waltz** (AA.BB.CC +A) C
-
107. **✓ Isabella's Waltz** (Pete Showman; AA'BB) G
-
108. **Jaybird** D
-
109. **✓ Jimmy in the Swamp** G+Em
-
110. **✓ Jimmy Shank** A
-
111. **John Ryan's Polka** (aka Sean Ryan's) D
-
112. **✓ Johnny, Johnny, Don't Get* Drunk** (*Come Horðe)
-

113. Josephine's Waltz (Josefins dopvals; Roger Tallroth) G Bm

Musical notation for Josephine's Waltz in G major, 3/4 time. The melody starts with a G chord and ends with a Bm chord.

114. Joys of Quebec A

Musical notation for Joys of Quebec in A major, 6/8 time. The melody starts with an A chord.

115. ✓ Julieann Johnson / Julie Ann Johnson D

Musical notation for Julieann Johnson / Julie Ann Johnson in D major, 6/8 time. Chords include D, G, D, and A.

116. June Apple Amix

Musical notation for June Apple in A major, 6/8 time. Chords include A and G.

_____ K _____

117. Kansas City Kitty (by Walter Donaldson) G

Musical notation for Kansas City Kitty in G major, 6/8 time. Chords include G, Eb7, G, and E7.

118. ✓ Katy Bar the Door D

Musical notation for Katy Bar the Door in D major, 6/8 time. Chords include D and A7.

Musical notation for Katy Bar the Door in D major, 6/8 time. Chords include D and A.

119. Kerry Mills' Barn Dance D

Musical notation for Kerry Mills' Barn Dance in D major, 6/8 time. Chord includes D.

120. ✓ Kiowa Special D+Bm

Musical notation for Kiowa Special in D major, 6/8 time. Chords include D, G, D, G, D, and A.

121. ✓ Kitchen Girl, The Amx+Ado

Musical notation for Kitchen Girl, The in A major, 6/8 time. Chords include A, G, A, G, and E7.

_____ L _____

122. ✓ Lady of the Lake (A-Mixolydian ver.) Amix

Musical notation for Lady of the Lake (A-Mixolydian ver.) in A major, 6/8 time. Chords include D and G.

Musical notation for Lady of the Lake (A-Mixolydian ver.) in A major, 6/8 time. Chords include A and G.

123. Lady of the Lake (D maj. ver.) D

Musical notation for Lady of the Lake (D major version) in D major, 6/8 time. Chords include D, G, and A.

124. Lady of the Lake (G maj. ver.) G

Musical notation for Lady of the Lake (G major version) in G major, 6/8 time. Chords include G and C.

125. Leather Britches G

Musical notation for Leather Britches in G major, 6/8 time. Chord includes G.

Musical notation for Leather Britches in G major, 6/8 time. Chord includes G.

126. ✓ Liberty D

Musical notation for Liberty in D major, 6/8 time. Chords include D and G.

127. **Little Billy Wilson** (3 parts: AA.B.CC) A

Musical notation for 'Little Billy Wilson' in G major, 2/4 time. It consists of three staves. The first staff has a treble clef and a key signature of two sharps (F# and C#). The melody starts with a quarter rest, followed by quarter notes G, A, B, C, D, E, F#, G. The second staff continues with quarter notes G, A, B, C, D, E, F#, G. The third staff continues with quarter notes G, A, B, C, D, E, F#, G. Chords are indicated above the notes: A, D, A, E, A, E, A, D, A.

128. ✓ **Little Brown Hand** (A one-step; swing it) G

Musical notation for 'Little Brown Hand' in G major, 2/4 time. It consists of one staff with a treble clef and a key signature of two sharps. The melody starts with a quarter rest, followed by quarter notes G, A, B, C, D, E, F#, G. Chords are indicated above the notes: G, D, G.

129. **Little Dutch Girl** (aka Pretty ~) A

Musical notation for 'Little Dutch Girl' in G major, 2/4 time. It consists of one staff with a treble clef and a key signature of two sharps. The melody starts with a quarter rest, followed by quarter notes G, A, B, C, D, E, F#, G. Chords are indicated above the notes: A, E.

130. ✓ **Little Liza Jane** D

Musical notation for 'Little Liza Jane' in G major, 2/4 time. It consists of one staff with a treble clef and a key signature of two sharps. The melody starts with a quarter rest, followed by quarter notes G, A, B, C, D, E, F#, G. Chords are indicated above the notes: D, A.

131. **Little Rabbit** (5 parts) A

Musical notation for 'Little Rabbit' in G major, 2/4 time. It consists of one staff with a treble clef and a key signature of two sharps. The melody starts with a quarter rest, followed by quarter notes G, A, B, C, D, E, F#, G. Chords are indicated above the notes: A.

132. ✓ **Liza Jane** A

Musical notation for 'Liza Jane' in G major, 2/4 time. It consists of one staff with a treble clef and a key signature of two sharps. The melody starts with a quarter rest, followed by quarter notes G, A, B, C, D, E, F#, G. Chords are indicated above the notes: A.

133. **Lovers' Waltz** (Last time in D) G+D

Musical notation for 'Lovers' Waltz' in G major, 3/4 time. It consists of three staves with a treble clef and a key signature of two sharps. The melody starts with a quarter rest, followed by quarter notes G, A, B, C, D, E, F#, G. Chords are indicated above the notes: G, C, G, G, Am7, G, A, D, G, D (etc.).

M

134. ✓ **Maggots in the Sheep's Hide** D

Musical notation for 'Maggots in the Sheep's Hide' in G major, 2/4 time. It consists of two staves with a treble clef and a key signature of two sharps. The melody starts with a quarter rest, followed by quarter notes G, A, B, C, D, E, F#, G. Chords are indicated above the notes: D, G, D, A, D, G.

135. ✓ **Magpie** G

Musical notation for 'Magpie' in G major, 2/4 time. It consists of one staff with a treble clef and a key signature of two sharps. The melody starts with a quarter rest, followed by quarter notes G, A, B, C, D, E, F#, G. Chords are indicated above the notes: G, D.

136. **March of St. Timothy, The** (by Judy Morningstar) G

Musical notation for 'March of St. Timothy, The' in G major, 4/4 time. It consists of one staff with a treble clef and a key signature of two sharps. The melody starts with a quarter rest, followed by quarter notes G, A, B, C, D, E, F#, G. Chords are indicated above the notes: G, D, Em, Bm.

137. **Margaret's waltz** (by Pat Shaw) D

Musical notation for 'Margaret's waltz' in G major, 3/4 time. It consists of one staff with a treble clef and a key signature of two sharps. The melody starts with a quarter rest, followed by quarter notes G, A, B, C, D, E, F#, G. Chords are indicated above the notes: D, Bm, Em, A7.

138. **Margaret's waltz** (by Pat Shaw) A

Musical notation for 'Margaret's waltz' in G major, 3/4 time. It consists of one staff with a treble clef and a key signature of two sharps. The melody starts with a quarter rest, followed by quarter notes G, A, B, C, D, E, F#, G. Chords are indicated above the notes: A, F#m, Bm, E7.

139. ✓ **Merriweather** (Traditional) G

Musical notation for 'Merriweather' in G major, 2/4 time. It consists of one staff with a treble clef and a key signature of two sharps. The melody starts with a quarter rest, followed by quarter notes G, A, B, C, D, E, F#, G. Chords are indicated above the notes: G, Am, G.

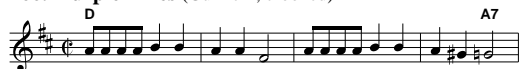
140. **Midnight on the Water** (by Luke Thomasson) D

Musical notation for 'Midnight on the Water' in G major, 3/4 time. It consists of one staff with a treble clef and a key signature of two sharps. The melody starts with a quarter rest, followed by quarter notes G, A, B, C, D, E, F#, G. Chords are indicated above the notes: D.

141. ✓ Miller's Reel in A A
- A D E A E
-
142. ✓ Miller's Reel in G (J.P. Fraley ver.) G
- G C D G
-
143. Minnesota Red Wing (aka ___) G
- G D
-
144. Miss McLeod's (= Hop Light, Ladies) G
-
145. ✓ Mississippi Sawyer D
- D G
-
146. Molly O'Donnell's (Jig; not fast) Bm
- Bm A G F#m D
-
- N
147. Nail That Catfish To a Tree (by Steve Rosen) G
- ³
-
148. ✓ Needlecase D
- D G D A
-
149. ✓ New Five Cents (aka Buffalo Nickel) D
- D G D
-
150. ✓ North Carolina Breakdown G
- G
-
- O
151. Off To California (a hornpipe: swing it.) G
- ³ G D G C
-
152. ✓ Old Jimmy Sutton D
- D A D A
- D A D A
-
153. Old Joe Clark (Usual key) Amix
- A G
-
154. Old Joe Clark - D mix. (Not usual key) Dmix
- D C
-
155. ✓ Old Man and Old Woman (Swing it) D
- D A7
- D A7 G D
-
156. ✓ Old Man and Old Woman (Swing it) G
- G D7
-

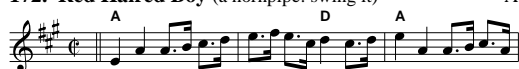
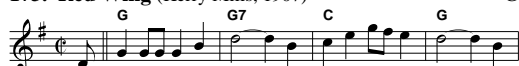
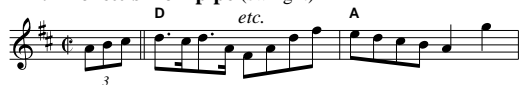
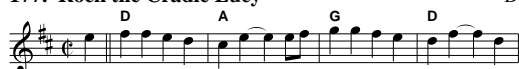
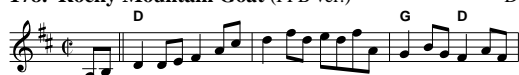
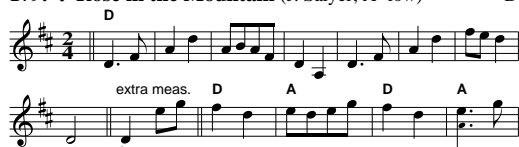
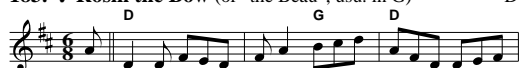
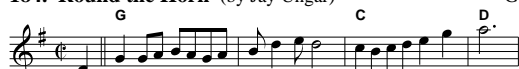
157. Old Mother Flanagan A158. ✓ Old Piss D159. Ookpik Waltz (AAB) G160. ✓ Over the Waterfall D

_____ P Q _____

161. Peacock Rag D162. ✓ Peeler Creek (Feed Your Babies Onions) G+Em163. Petronella D164. ✓ Pig Ankle Rag D165. ✓ Possum up a Gum Stump (#4) G166. Purple Lilies (Gu-Achi; crooked) D167. ✓ Put Your Little Foot (La Varsouvienne) C168. Quince Dillion's High D Tune D

_____ R _____

169. Rachel (Phillips ver.) D

170. Ragtime Annie (with 3rd part in G) D+G171. Rakes of Mallow G172. Red Haired Boy (a hornpipe: swing it) A173. Red Wing (Kerry Mills, 1907) G174. Rickett's Hornpipe (swing it) D175. Road to Boston (On the ...) D176. Rock the Cradle Joe D177. Rock the Cradle Lucy D178. Rocky Mountain Goat (FFB ver.) D179. ✓ Rose in the Mountain (J. Salyer; A=low) D180. Rose Tree "#1" (per FFB; aka #2) D181. Rose Tree "#2" (per FFB; aka #1) D182. ✓ Rosin the Bow (or "the Beau"; alt. in D) G183. ✓ Rosin the Bow (or "the Beau"; usu. in G) D184. Round the Horn (by Jay Ungar) G

S

185. ✓ **Sadie at the Back Door** (by Jere Canote) D
- 
186. **Sail Away Ladies 1** (♭ la J.P. Fraley) G
- 
187. **Sail Away Ladies 2** (♭ la J. Hartford, B. Molsky) D
- 
188. **Saint Anne's Reel** (Canadian) D
- 
189. ✓ **Sally Ann** (var. of Great Big Taters & Sail Away Ladies) G
- 
190. **Sally Ann Johnson** D
- 
191. ✓ **Sally Goodin** A
- 
192. **Sally in the Garden** Am
- 
193. ✓ **Sandy Boys** (A mix. version) Amix
- 
194. **Sandy River Belle** G
- 
195. ✓ **Santa Anna's Retreat** (Crooked) Ador
- 
196. ✓ **Sarah Armstrong** D
- 
197. ✓ **Saturday Night Waltz** G
- 
198. **Seneca Square Dance** (Waiting for the Federals) G
- 

199. Shelvin' Rock Amix
-
200. ✓ Shenandoah Falls A+Bdo
-
201. Shoes and Stockings G
-
202. Shoo Fly D
-
203. ✓ Shove That Pig's Foot a Little Further I G
-
204. ✓ Snouts and Ears of America (Sarah Armstrong) D
-
205. ✓ Snow Deer G
-
206. ✓ Snowflake Reel (aka ~ Breakdown) D
-
207. ✓ Soldier's Joy D
-
208. Speed the Plow (John Moorehead, 1788) A
-
209. Spotted Pony D
-
210. Staten Island Hornpipe (swing it) D
-
211. Step Around Johnny D
-
212. Stone's Rag (40 Dogs in the Meathouse) C
-
213. Swedish Liberty (Polka from S. Dalarna) D
-
214. Swedish Soldier's Joy (aka ___) D
-

T U V

215. **Temperance Reel** (Irish-style reel) G

216. **Tennessee Waltz** (D instr.; Redd Stewart, Pee Wee King) D

217. **Tennessee Waltz** (G vocal; Redd Stewart, Pee Wee King) G

218. **Texas / Newcastle** Amix

219. **Texas Gals** (or "Gales") C

220. **Too Young to Marry** (My Love is but a Lassie Yet) D

221. **Turkey in the Straw** G

W

222. **Wagoner** (aka Tennessee, Georgia, etc. Wagoner) C

223. ✓ **Waiting for Nancy** D+Dmx

224. ✓ **Walkin' in the Parlor** D

225. ✓ **Walkin' Up Town** (Swing it) C

226. ✓ **Waltz of the Little Girls** (or in G) D

227. **Waterbound** (or Stay All Night; alt key: A) D

228. **Waynesboro** G

229. **West Fork Gals** D

230. Whiskey Before Breakfast D

Musical notation for 'Whiskey Before Breakfast' in D major, 2/4 time. Chords: D, G, D.

231. Wild Horses At Stony Point (Pigtown Fling) G

Musical notation for 'Wild Horses At Stony Point' in G major, 2/4 time. Chord: G.

232. ✓ Wild Rose of the Mountain (Crooked) Amix

Musical notation for 'Wild Rose of the Mountain' in D major, 2/4 time. Chords: A, G, A, A, G.

233. Wildwood Flower G

Musical notation for 'Wildwood Flower' in G major, 2/4 time.

_____ X Y Z _____

234. Year of Jubilo (aka Kingdom Come) D

Musical notation for 'Year of Jubilo' in D major, 4/4 time.

235. Yellow Rose of Texas, D (Or in G) D

Musical notation for 'Yellow Rose of Texas, D' in D major, 2/4 time. Chords: D, G, D.

236. Yellow Rose of Texas, G (Or in D) G

Musical notation for 'Yellow Rose of Texas, G' in G major, 2/4 time. Chords: G, C, G.

237. ✓ Yew Piney Mountain (Crooked: long A, offset B)mix

Musical notation for 'Yew Piney Mountain' in D major, 2/4 time. Chord: A.

Musical notation for 'Yew Piney Mountain' in D major, 2/4 time. Chord: A.

238. ✓ You Married My Daughter, But ... (New England)

Musical notation for 'You Married My Daughter, But ...' in D major, 2/4 time. Chords: G, D.

Musical notation for 'You Married My Daughter, But ...' in D major, 2/4 time. Chords: G, (D7) D7, G.